

BEARING YOUR SOLUTIONS IN MIND





International Bearings  
Group of Companies

# CORE VALUES

## Model of Excellence

- To implement best practices and set superior standards in our work processes & methods.

## Integrity

- To possess upright characters and steadfastly adhering to high moral principles and professional standards.

## Nurture

- To educate and develop our people for growth, whilst providing them with care and welfare.

## Diligence

- To show persistent effort and hard work.



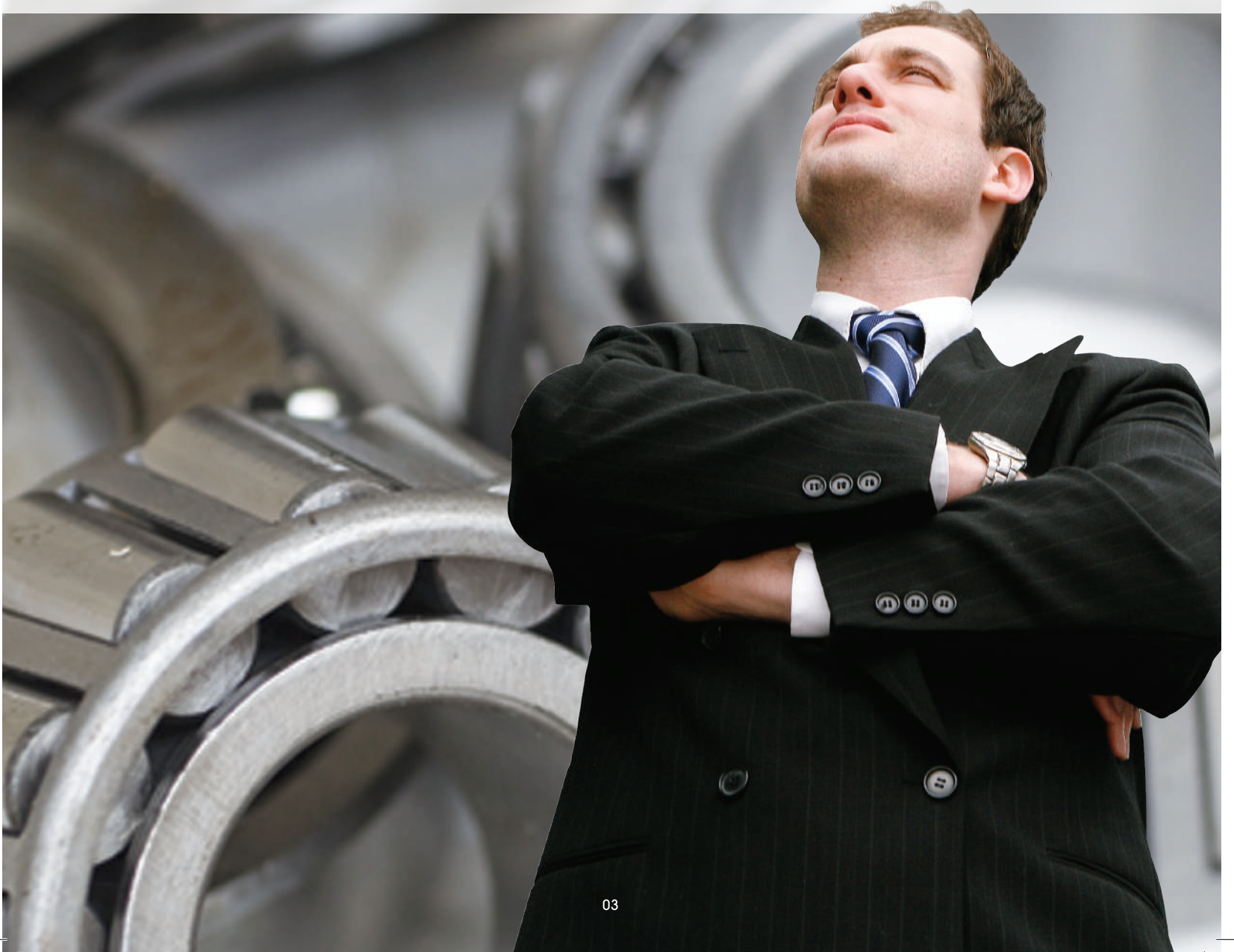


# VISION

To be a Reputable Organization that delivers Customized Bearings Solutions and Service Quality Excellence.

# MISSION

- Instilling a symbiotic relationship for our Principals and Customers.
- Building a Proactive and Cohesive workforce.
- Growing our organization through dynamic leadership and strong brand recognition.







International Bearings  
Group of Companies

# “PROFILE”

Founded by Mr Ng Tjai Hong in 1971, International Bearings Pte Ltd started out in a small shophouse at Sungei Road. Today, the organisation has grown to become a key player in the distribution of bearings and related products; and is an authorised and exclusive distributor for various brands such as NACHI, FYH, TIMKEN, FAG, NMB, IJK, JNS, KOYO, FAFNIR and SAMICK.

With a strong leadership and a highly productive team at hand, we are committed to provide the best for our customer. Our products are selected based on strong competitive advantage, high quality and global potential. We thrive on changes, and will seek improvements and achieve zero defects in all areas. More importantly, we see the need to bring about security and above average returns for the employees and shareholders to ensure long-term relationships with them.

With the enhancement and reinforcement over 2 generations, International Bearings group of companies established more than 10 branch offices respectively in Malaysia, Indonesia, Thailand, Vietnam and China.

”



International Bearings building



# MILESTONES

- 1971** Mr T H Ng and his brothers started the bearings business with a staff strength of 3 from a small shophouse in Sungei Road, Singapore.
- 1976** The company was incorporated as International Bearings Pte Ltd. As the company expanded, our office was relocated to Rowell Road with staff strength increased to 9 employees.
- 1980** To accommodate more staff and further expand our operations, our office was relocated to No.74, Owen Road, Singapore.
- 1981** International Bearings, Johor Bahru (Malaysia) was established.
- 1982** Expanded 2 more shop houses No. 73 and 75, Owen Road.
- 1986** We increased our office space and also expanded our presence into the Industrial & Automotive sector.
- 1987** The 2nd generation of the family led by Mr Gavin Ng took over the helm of the business.
- 1989** To cope with the expansion of our Export & Industrial teams, 2 more units in No.77 & 79 Owen Road, Singapore were purchased for additional office space
- 1990** We acquired a new 26,900 sq ft warehouse in No.19 Lor Tukang Empat, Singapore.
- 1991** International Bearings, Kuala Lumpur (Malaysia) was established.
- 1993** PT. Central Bearindo International., Jakarta (Indonesia) was established.
- 1997** Application to JTC for a new land was submitted for the new International Bearings Building, which will be the Sales Headquarter and Regional Distribution Hub for International Bearings Group of Companies.
- 1999** International Bearings, Penang (Malaysia) was established.



► International Bearings first founded shop in 1971

- 2000** The new International Bearings Building with a build-in automated warehouse, was completed with a 30 meter height modern equipment, ASRS without / (Automated Storage & Retrieval System) and WMS (Warehouse Management System) bridged with our in house business software IB2K were fully operational in this year.
- 2002** International Bearings, Kuantan (Malaysia) was established.  
SIB Bearings Co., Ltd, Bangkok (Thailand) was established.
- 2003** International Bearings, Klang (Malaysia) was established.  
Inter - Roll Bearings Co, Ltd., Shanghai (China) was established.  
PT. Century Bearindo International, Surabaya (Indonesia) was established.
- 2004** PT. International Bearings, Batam (Indonesia) was established.
- 2006** International Bearings, Kota Kinabalu (Malaysia) was established.  
PT. Central Bearindo, Pekan Bahru (Indonesia) was established.
- 2008** Pt Central Bearindo Int'l, Medan was established.
- 2010** Pt Central Bearindo Int'l, Palembang was established.
- 2011** International Bearings (KL) Sdn Bhd, Malaysia Head Office in Petaling Jaya was established.  
Rollbearings (Shanghai) Co., Ltd was established.
- 2012** International Bearings (Kuching) Sdn Bhd was established.







◀ Customer Service

**Our team of dedicated staff and modern facilities will provide the best in customer services.**



State-Of-The-Art technology systems providing warehouse management, inventory management and other logistics solutions.

◀ Control Room





Conventional Palletising Warehouse



# FACILITIES

Our warehouse, located at Toh Tuck Link, equipped with sophisticated equipment and computer system. The facilities consist of ASRS (Automated Storage & Retrieval System), WMS (Warehouse Management System) and on-line update capabilities.

Conventional Warehouse



30 meter height, ASRS  
(Automated Storage & Retrieval System)







**International Bearings**  
Group of Companies

**CHINA**

**THAILAND**

**VIETNAM**

**MALAYSIA**

**SINGAPORE**

**INDONESIA**



## SINGAPORE

( HEAD OFFICE )

**International Bearings Pte Ltd**

1A Toh Tuck Link  
Singapore 596223  
Tel : (65) 6461 6666 | Fax : (65) 6461 6633  
Email : sales@sg.intbearing.com  
www.intbearing.com



( TOWN OFFICE )

73/75 Owen Road  
Singapore 218891  
Tel : (65) 6293 0760 | Fax : (65) 6293 4496



## MALAYSIA

PETALING JAYA ( HEAD OFFICE )

**International Bearings (KL) Sdn Bhd**

12F Jalan Tandang Seksyen 51  
46050 Petaling Jaya Selangor  
Tel : 6 03 7787 9000 | Fax : 6 03 7787 9111  
Email : ib.kl@my.intbearing.com

KUALA LUMPUR

**International Bearings (KL) Sdn Bhd**

20 Jalan 10/108C  
Taman Sungai Besi  
57100 Kuala Lumpur, Malaysia  
Tel : 6 03 7983 2977 | Fax : 6 03 7983 2789  
Email : ib.kl@my.intbearing.com

JOHOR BAHRU

**International Bearings Sdn Bhd**

No.22 & 24, Jalan Molek 1/13  
Taman Molek  
81100 Johor Bahru, Johor, Malaysia  
Tel : 6 07 3579 222 | Fax : 6 07 3569 988  
Email : ib.jb@my.intbearing.com

KLANG

**International Bearings (KL) Sdn Bhd**

33, Jalan Satu  
Kawasan 16, Berkeley Town Centre  
43100 Klang, Selangor, Malaysia  
Tel : 6 03 3342 1888 | Fax : 6 03 3341 1868  
Email : ib.klang@my.intbearing.com

BUTTERWORTH

**International Bearings (Penang) Sdn Bhd**

5053 Jalan New Ferry  
12100 Butterworth, Penang, Malaysia  
Tel : 6 04 3327 888 | Fax : 6 04 3326 668  
Email : ib.penang@my.intbearing.com

KUANTAN

**International Bearings (Kuantan) Sdn Bhd**

B-2640 Jalan Beserah  
25300 Kuantan, Pahang Darul Makmur,  
Malaysia  
Tel : 6 09 5156 668 | Fax : 6 09 5156 669  
Email : ib.kuantan@my.intbearing.com

SABAH

**International Bearings (East Malaysia) Sdn Bhd**

DBKK 2 (Lot 1) Ground & 1st Floor  
Pusat Perindustrian Ngee Lim  
Lorong Burung Keleto  
Mile 5½ Off Jalan Tuaran  
88450 Kota Kinabalu, Sabah  
Tel : 6 088 387188 | Fax : 6 088 387187  
Email : ib.kk@my.intbearing.com

KUCHING

**International Bearings (Kuching) Sdn Bhd**

Lot 2159 Sublot 12 & 13 Ground Floor  
Section 66 KTLD,  
Jalan Perimat Pending Industrial Estate,  
93450 Kuching, Sarawak, Malaysia  
Tel : 6 082 488282 | Fax : 6 082 488181  
Email : ib.kuching@my.intbearing.com

# REGIONAL PRESENCE



## INDONESIA

### JAKARTA

**PT Central Bearindo International**  
Rukan Mitra Krekot  
Jalan H Samanhudi 21M  
10710 Jakarta, Indonesia  
Tel : 62 21 3519 318 | Fax : 62 21 3519 320  
Email : cbi.jkt@id.intbearing.com  
www.bearindo.com

### SURABAYA

**PT Century Bearindo International**  
Jln. Dupak Blok 65 A26  
Surabaya, Indonesia  
Tel : 62 31 5357 878 | Fax : 62 31 5357 979  
Email : cbi.sby@id.intbearing.com

### BATAM

**PT International Bearings**  
Komplek Rezeki Grahams  
Blok J, No.07 Sungai Panas, Batam  
Tel: 62 778 472 222 | Fax : 62 778 472 233  
Email : ib.pt@id.intbearing.com  
www.central-bearings.com

### PEKAN BARU

**PT Central Bearindo International**  
Jalan Riau No.37 Pekanbaru Baru  
28155 Riau, Indonesia  
Tel : 62 761 24469 | Fax : 62 761 24175  
Email : cbi.pku@id.intbearing.com

### MEDAN

**PT Central Bearindo International**  
Komplek Krakatau Multi Centre Block D No. 3  
Jl. Gunung Krakatau  
Medan -20241  
Tel : 061 - 664 2222 | Fax : 061 - 662 3666  
Email : cbi.mdn@id.intbearing.com

### PALEMBANG

**PT Central Bearindo International**  
Jl.Lingkaran I No. 1096 B, Kelurahan 15 Ilir,  
Kecamatan Ilir Timur I,  
Palembang 30124 , Indonesia  
Tel : 62 711 366 717 | Fax : 62 711 363 559  
Email : cbi.plb@id.intbearing.com



## CHINA

### SHANGHAI

**Inter-Roll Bearings (Shanghai) Co., Ltd**  
1F/333, Fute Road North Waigaoqiao  
Free Trade Zone  
200030 Shanghai, China  
Tel : 86 21 5899 7111 | Fax : 86 21 5899 7112  
Email : inter-roll@irbsh.com  
www.irbsh.com

### CHENGDU

**Inter-Roll Bearings (Shanghai) Co., Ltd.**  
Unit 9-10 20building, A District,  
Wanguan Machine City, NO.555 Jinfu Road,  
Chengdu, Sichuan, China.  
Tel : 86-(0)28-8763 3636 | Fax : 86-(0)28-8761 8619

### WUHAN

**Inter-Roll Bearings (Shanghai) Co., Ltd.**  
Room.3208 Trurou Plaza, WuSheng Road,  
WuHan, HuBei, China.  
Tel : 86-(0)27-85861356 | Fax : 86-(0)27-85861006

### Rollbearings (Shanghai) Co. Ltd

785 Hutai Road ,  
Block A, 5th Floor, Unit 5020 & 5022,  
Shanghai 200072, China .  
Tel : 86 21 5160 0128 | Fax : 86 21 3652 3288  
Email : joseph.ang@rollbearings.com



## VIETNAM

### HO CHI MINH

**Bearings Central Company Limited ( BCC )**  
1170A-1170B Đường 3/2, Phường 12, Quận 11  
Thành phố Hồ Chí Minh – Vietnam  
Tel : (84.8)3962 9608 | Fax : (84.8)3962 9611  
Email : bearingscentral@vn.intbearing.com

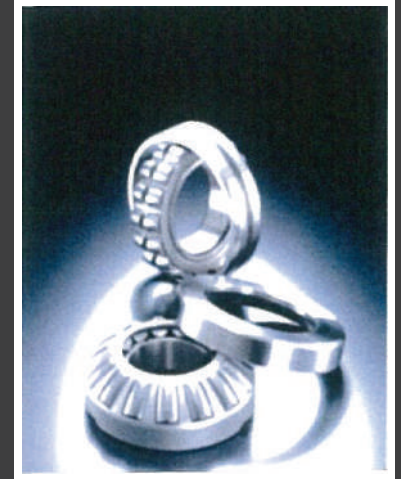


## THAILAND

### BANGKOK

**SIB Bearings Co., Ltd**  
74/24 Rama III Rd.  
Soi 61 Chongnonsee, Yannawa.  
Bangkok 10120, Thailand  
Tel : 66 2 6834 393 | Fax : 66 2 6834 394  
Email : sales@sibbearings.co.th





Nachi-Fujikoshi was founded in Toyama City in Year 1928. Aim with Corporate mission of "Contributing to the progress of the world of product manufacture", we established an integrated manufacturing system that cover the entire production process from materials input right through to output of the finished product, have a clear view of every stage of production, a unique perspective that is reflected in the superb quality of our products.

Our multifaceted operations and technologies to provide a wide range of solutions to customers in field of automotive, industrial machinery, energy and infrastructure. Established our slogan "Fulfilling aspirations as a manufacturing company".

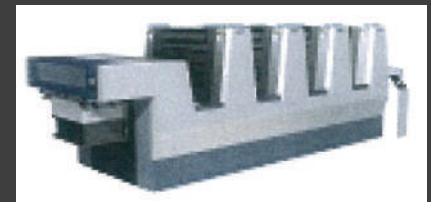
## INDUSTRIAL APPLICATION



Press Brake Machine



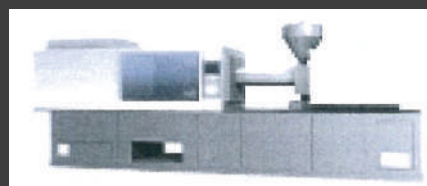
Self Aligning Spherical Roller Bearings = EX series =



Printing Machine



Sealed Ball Screw Support Bearings



Injection Moulding Machine



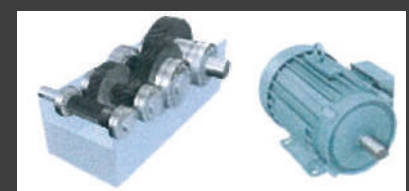
Paper Mill



CNC Machine

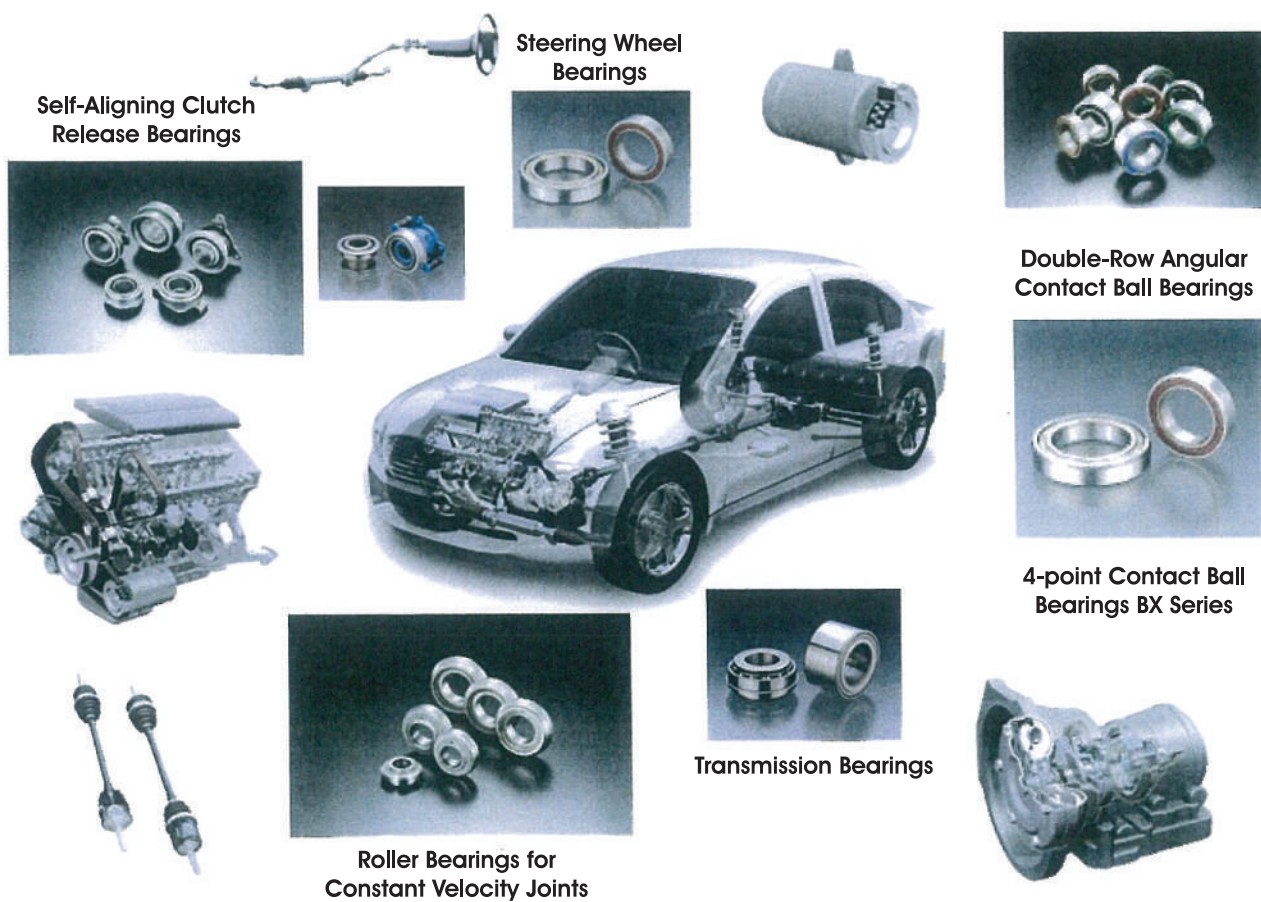


Palm Oil Industry

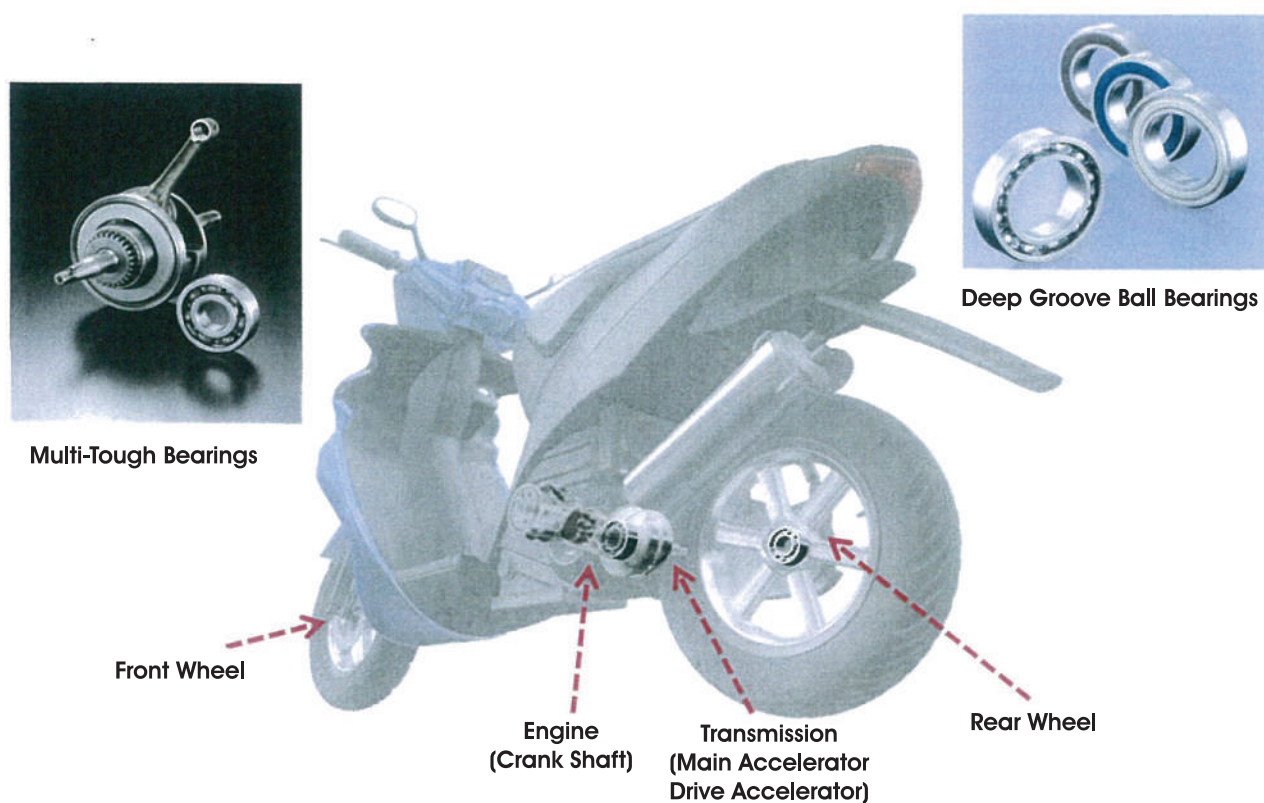


Motor application

## AUTOMOBILES AND AUTOMOTIVE APPLICATION



## MOTORCYCLE APPLICATION





The Timken Company is a global industrial technology leader, applies its deep knowledge of materials, friction management and power transmission to improve the reliability and efficiency of industrial machinery and equipment all around the world. The company engineers, manufactures and markets mechanical components and high-performance steel. Timken® bearings, engineered steel bars and tubes - as well as transmissions, gearboxes, chain, related products and services - support diversified markets worldwide. The fortune 500 company headquartered in Canton, Ohio employs a team of over 20,000 people operating from 30 countries, makes the world more productive and keeps industry in motion.

## Timken Products Range

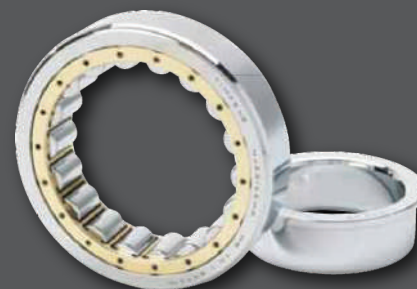
IsoClass™ Metric Bearings



▶ Tapered Roller Bearing



▶ Spherical Roller Bearing



▶ Cylindrical Roller Bearing

Housed Units



▶ Type E Tapered Roller Bearing Housed Unit



▶ SNT Plummer Block Housings



Timken understand the demands of daily industrial operations and how performance can affect your business. This line of related products have been developed to help in friction management as well as improve and ease the overall system performance of bearings offering just the solution for your bearing needs.

## Timken Related Products



▶ Wireless Conditioning Monitoring System



▶ Lubricants / Grease / Single-point Lubricants



▶ Impact Fitting Tool



▶ Induction Heaters





| Mining & Construction



| Pulp & Paper



| Steel



## FAG Bearing Range

- Deep Groove Ball Bearings
- Angular Contact Ball Bearings
- Four Point Contact Ball Bearings
- Self-Aligning Ball Bearings
- Cylindrical Roller Bearings
- Single Row, Double & Full Complement
- Taper Roller Bearings
- Barrel & Spherical Roller Bearings
- Ultra Light Series Bearings
- Thrust Ball Bearings



SPHERICAL ROLLER BEARING



ANGULAR CONTACT BEARING





| Gears & Transmission



| Pumps & Compressors



| Railway



| Maintenance Equipment

## Grease & Maintenance Products

- Heaters
- Adapter & Withdrawal Sleeves
- Locking Devices - Nut & Washer
- Laser Equalign
- Smart Check
- Arcanol Grease

HEATER



LASER - EQUALIGN



## International Bearings

Authorized Distributor

**FAG**  
Germany

SMART CHECK



ARCANOL



CYLINDRICAL ROLLER BEARING



DEEP GROOVE BALL BEARING



SPLIT BEARING HOUSING UNIT



[www.schaeffler.com](http://www.schaeffler.com)

# NEW DESIGNS 2013





# ALL KIND OF MOUNTED BEARING UNITS



THE NEW FYH ORIGINAL  
SOLID BASE  
PILLOW BLOCK HOUSINGS



INWARD FACING LIP WHICH  
ALLOWS GREASE TO FLOW BACK  
TOWARDS THE BALLS AND RACEWAY



HIGH LOAD, EXTREME PRESSURE,  
WATER RESISTANT ORIGINAL GREASE





# MinebeaMitsumi

*Passion to Create Value through Difference*

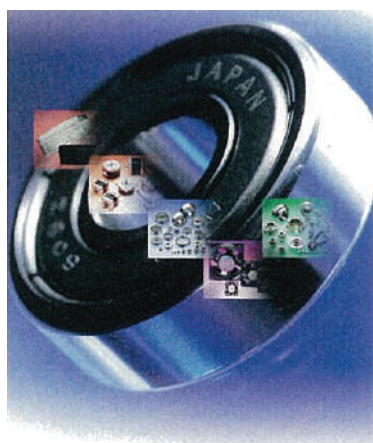
Minebea Co., Ltd.

**Minebea** was founded in 1951 as Japan's first manufacturer to specialise in miniature ball bearings. Our company has grown to be the world's leading manufacturer of miniature and small-sized ball bearings, and has a global market share in excess of 60%.

Since our establishment half a century ago, Minebea has cultivated ultraprecision machining and mass production technologies. These technologies facilitate the production of all bearing's parts in-house, giving us the unparalleled advantage in terms of quality, supply capabilities, lead time and manufacturing cost.



Thailand BPI factory



## Ultraprecision Machining Technologies

### Ball bearing parts

The precision of a ball bearing is determined by several factors, including the raceway roundness of the inner and outer rings, the sphericity of the balls and the quality of the new materials used in each of the bearing's parts.



## PM-Type Stepping Motors

PM-type stepping motors use a permanent magnet as a rotor and contain no ball bearings. For speedometer and tachometer in automotive applications.



## Hybrid-Type Stepping Motors

These motors combine a rotor with a permanent magnet and a magnetic body that use ball bearings. These motors are digitally controlled by electronic pulses.



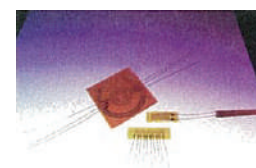
## Miniature and Small-Sized Ball Bearings

Each ball bearings comprises an outer ring, inner ring, balls, retainers, shields and snap rings. Essential to high-precision motors and other rotary components, ball bearings determine rotational accuracy. Minebea manufactures more than 8,500 types of ball bearings.



## Rod-End Bearings

Used in aircraft components, such as wing flaps, engine and wing mounts and hatches, rod-end bearings function as joints. These bearings are also extensively in helicopters, trains and automobiles.



## Measuring Components

### Strain Gauges

Strain gauges consist of a very fine metallic foil etched in a grid pattern, which is bonded to a device and used to measure the strain, or amount of deformation of the device when weight or force is applied.



## Magnetic Clutches and Brakes

Magnetic clutches use electric produced to lock or unlock the engine and the transmission input shaft, facilitating or terminating the flow of power. Magnetic brakes use electric magnets to accelerate, decelerate or stop rotation.





**International Bearings**  
Group of Companies

**IJK**

Japan

## INQUE JIKUKE KOGYO (IJK)

has been producing many standard and special types of ball bearings as a professional manufacturer since 1938, which have enjoyed good quality reputations by their users.

IJK's range of products include Angular Contact Ball Bearing among many product groups. However, special products are also available for production.

Exclusive Distributor

### ▼ LARGE BORE, EXTRA THIN BEARINGS

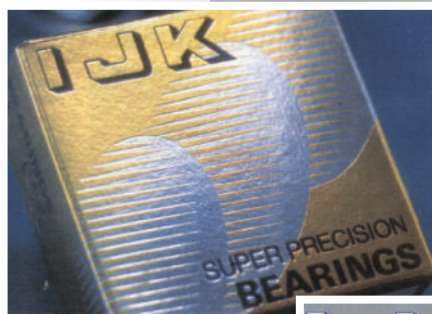


## OUR PRODUCTS RANGE

- Super Precision Ball Bearings
- Deep Groove Ball Bearings
- Large Bore, Extra Thin Bearings
- Felt Seal Ball Bearings
- Magneto Bearings
- Self-Aligning Ball Bearings
- Steering Bearings
- Double Row Ball Bearings

## SPECIAL PRODUCTS

- Housing Type Ball Bearings
- Carrier Roll Bearings with Threaded Stud
- Special Hole Type Ball Bearings
- Power Transmission Type Ball Bearings
- Drive Roll Bearings
- Idler Bearings



### ▲ SUPER PRECISION BEARINGS



### ▲ STEERING BEARINGS



ISO 9001 & OS 9000 CERTIFICATION FIRM  
DET NORSKE VERITAS INDUSTRY BY, THE NETHERLANDS



ACCREDITED BY  
THE DUTCH COUNCIL  
FOR CERTIFICATION  
Reg. No. :24



JQA-EM1292

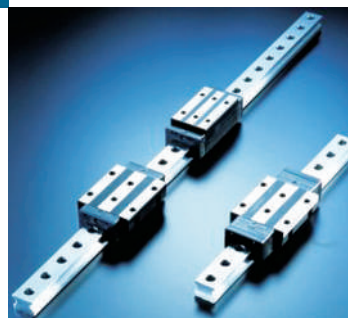
**The technology** of future is the dream and the happiness of human, so for the better future of human, we are doing our best at all parts. From the machine-parts industry to the industrial robots, we always try to develop the technology, where the humanity and the technology are together. Samick's efforts are there, too, all the time.



## Mission of **SAMICK**

By the Quality, for the Customer's satisfaction, of the Value, SAMICK Linear Bushing.

### ▼ **LMES & LMBS SUPER BUSHING**



▲ **LM SYSTEM**

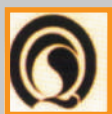


▲ **SHAFT & HOLDER**

### KOREA OFFICE AND PLANT



EM



KSA 9001



ISO 9001





International Bearings  
Group of Companies

**TWBB**®

China

Authorized Distributor

## BALL AND ROLLER BEARINGS

Timken Wuxi Bearings Company Limited, former Torrington Wuxi Bearings Co., Ltd., was established in 1996 with total investment of US\$30 million. The parent company is The Timken Company-A renowned leader in bearings and steel.

The Timken Company will be able to provide a broader range of anti-friction products and services. Timken has expanded its position as a leading global manufacturer of alloy steel, tapered and needle roller bearings for aerospace, automotive, industrial and rail markets.

Timken Wuxi's products range cover spherical roller bearings, cylindrical roller bearings, deep groove ball bearings, angular contact ball bearings, spherical plain bearings, needle roller bearings. Timken Wuxi's products are used in a broad range of industries and applications including energy sources, metallurgical, mining, textile, paper, construction, agriculture, automotive and motorcycle.



**Koyo**®  
Japan

Authorized Distributor

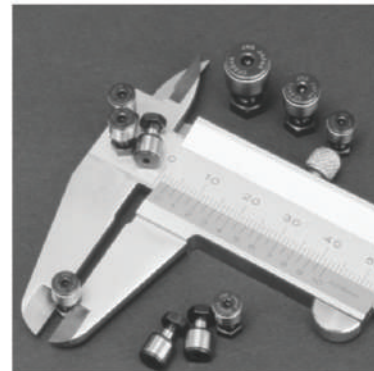
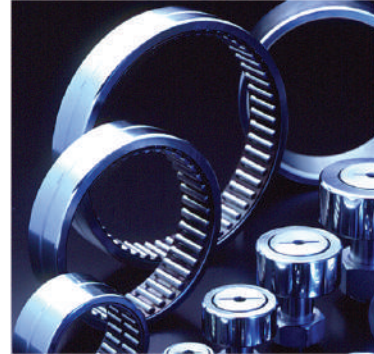
## KOYO Products Range

- Radial needle roller and cage assembly
- Drawn cup needle roller
- Heavy-duty needle roller
- Track roller
- Thrust needle roller and cage assembly
- Combined radial/thrust
- Drawn cup roller clutch

## Needle Roller Bearings







# STAINLESS STEEL TYPE ALL STANDARD STAINLESS STEEL CAM FOLLOWERS and ROLLER FOLLOWERS STOCK

JNS stainless steel series at valuable price and fastest delivery assured. JNS has sales results of Stainless Steel Bearings in world of OLED, TET, PDP and Semiconductor makers.



USA

**Power Team. 90 years experience in supplying Professional Grade High-pressure Hydraulic Pumps, Cylinders, Jacks, Puller & Tools.**

### A Heritage of Innovation

Since 1924, we've been instrumental in the development of innovative high force hydraulic power products, system and tools. And many of our products are known as the industry standard for rugged construction, reliability, and long service life. Today, Power Team provides a full range of professional grade products and services around the globe.

### Power Team Quality

Power Team Products are built tough with strict ISO 9001 manufacturing processes and are covered by a Lifetime Powerthon Warranty.





# Fenner®

## The Complete Drive Solution

A leading name in the power transmission industry for more than 150 years, the Fenner mark is widely recognized as synonymous with exceptional products for everyday use to rugged and demanding industrial applications. Fenner started life in 1861, producing some of the finest hard-wearing transmission belting available in the market, a feature that remains a cornerstone of the brand today. Over the years, many other complementary products have been added to the Fenner range to provide customers with a complete portfolio of premium products for applications across all industrial sectors. These include chains, high power CRE belts, couplings, taper bushes, sprockets, pulleys and Shaft Mounted Speed Reducer (SMSR). One of Fenner's core competences is her worldwide commitment to the quality assurance initiative. At the crux of this initiative is a continuous quest for improvements in product performance, reliability and safety whilst upholding the highest of consistent quality. Together with the delivery of superb customer value underpinned by engineering excellence owed to decades of experience, Fenner brings to the market "One Range, One Result, One Name".





## POWERING PROGRESS™

With over 14,000 people across 106 locations in 30 countries, Gates Corporation is the world's leading manufacturer of power transmission belts and a premier global manufacturer of fluid power products. Our highly engineered products are critical components used in diverse industrial and automotive applications where the cost of failure is very high relative to the cost of our products. We provide a differentiated value proposition to our customers by offering a complete portfolio of premium product and service solutions for both replacement and first-fit applications across our targeted end markets. We sell our products globally under the Gates brand, which is recognized by distributors, original equipment manufacturers, and installers as the premium brand for quality and technological innovation, a reputation which we have built for over a century since our founding in 1911.

### TIMING BELTS

**Gates PowerGrip® Timing Belts** are manufactured to the toughest OE requirements and are specified by car manufacturers around the world. The belts are manufactured with durable and reinforced rubber compounds (HSN) to resist temperature extremes and to protect the belt against grease, oil drops, moisture and wear.



### MICRO-V® BELTS

**Gates** high performance automotive V-Belts are made with high modulus, thermally active polyester tensile cords that exhibit extremely low stretch properties, or with SPDM rubber compound that cover most passenger cars, light trucks, buses and heavy-duty truck applications.



### V-BELTS

**Gates Micro-V® Belts** represents over 100 years of evolution in the pursuit of excellence in Micro-V® technology. The belts are designed using advanced manufacturing technology and premium EPDM construction to provide customers with superior A/BDS and new vehicle type performance.



### TENSIONERS AND PULLEYS

With a full line of over **1000 tensioners and idlers** globally, **Gates** ensures that every product they manufacture is built to rigid tolerances and specifications that guarantee OE fit, form and function.



### HOSES AND WATER PUMPS

**Gates** is widely recognized by the world's leading manufacturers as a supplier of quality hoses.

**Gates water pumps** are recognized in the industry for their durability and superior quality, ensuring customers with worry-free operation for the life of their vehicle.



### KITS

**Gates offers the Best and Most Complete Repair Solution by Replacing All Critical System Components at the Same Time.**





At Bata Industrials we believe that people work at their best when they are better equipped and protected. We want to improve people working life by delivering the highest quality safety footwear, designed to meet the demands of hard working people wherever they are in the world and providing them with the best safety shoes to match their needs. Everything we do is aimed at exceeding customers expectations with an attitude of Quality+.

ACAPULCO



CHARLESTON



DARWIN



CLARK



TITAN



OAK



**CERTIFICATION**

**SNI**

ISO 9001-2008 STANDARD

**KAN** Komite Akreditasi Nasional  
Lembaga Sertifikasi Produk  
LSPR-009-IDN



EN ISO 20345:2004



LEC FI00327735

# Honeywell

U.S.A

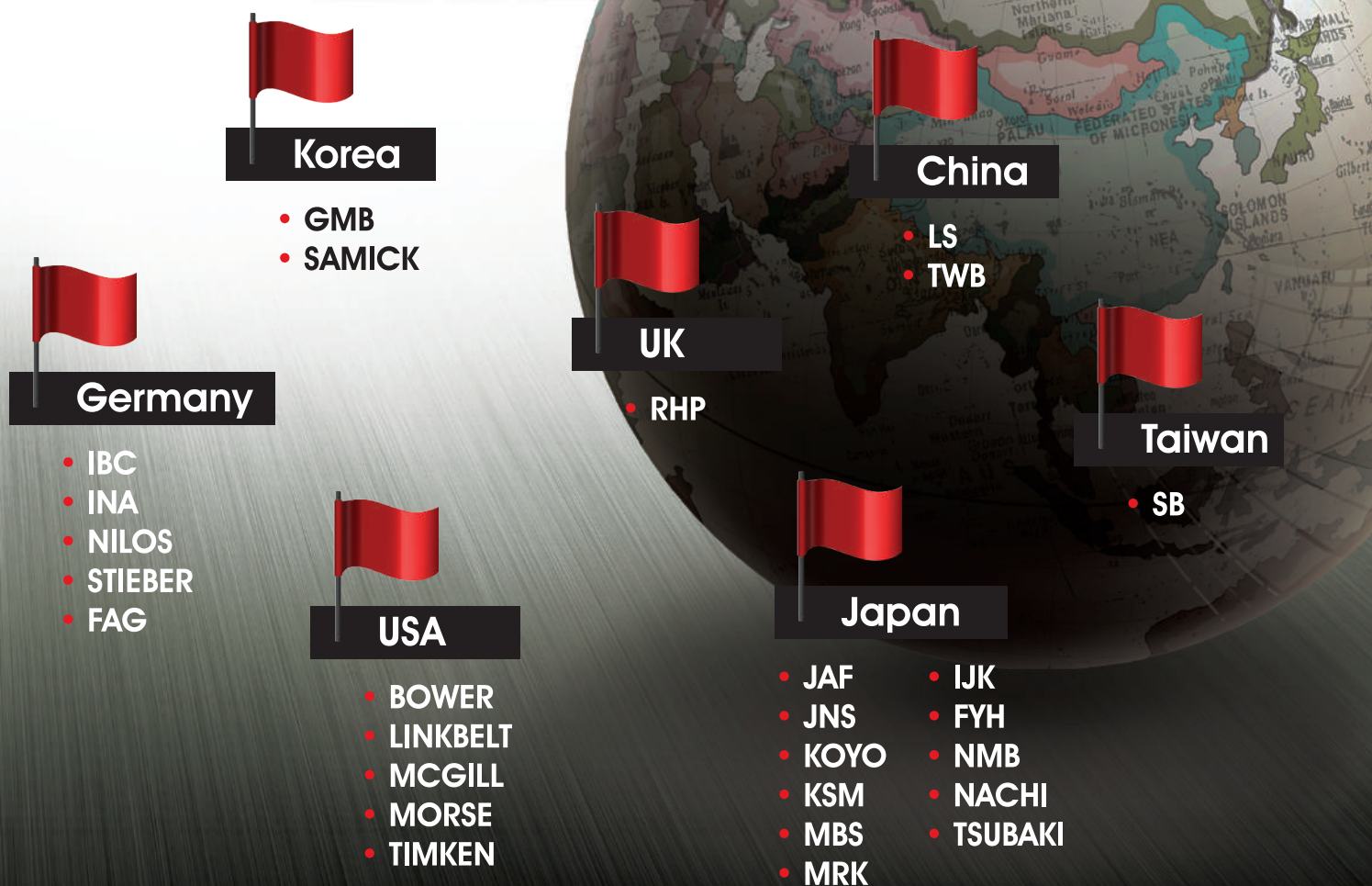
Safety Products has the broadest portfolio of leading safety solutions in the marketplace today. Our core mission is to help safety managers build an enduring culture of safety that minimizes injuries and maintains a more protective and productive workplace. Partner with Honeywell to discover new ways to lead your workers to safety.



**Certification:**



# STRATEGIC PARTNERS





[WWW.INTBEARING.COM](http://WWW.INTBEARING.COM)