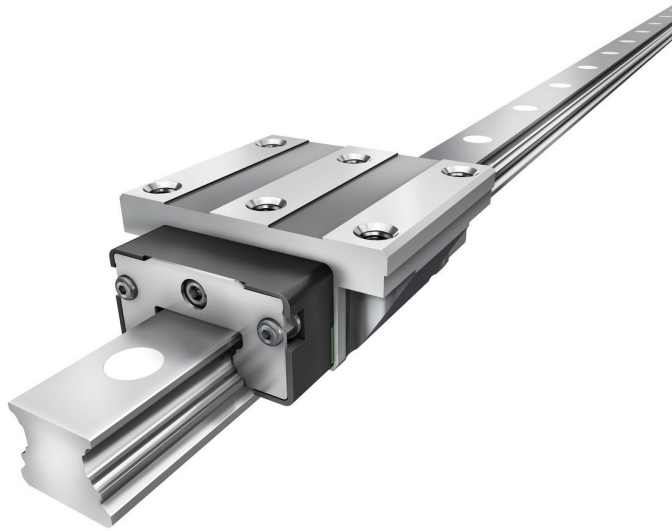


# INDUSTRIAL NEWS



## Higher Load Ratings - Reliable - Flexible

### Linear Recirculating Ball Bearing and Guideway Assembly

This new performance class of our proven linear recirculating ball bearing and guideway assembly means that machines' load carrying capacity, smooth running characteristics, and precision can all be improved without any changes to the design

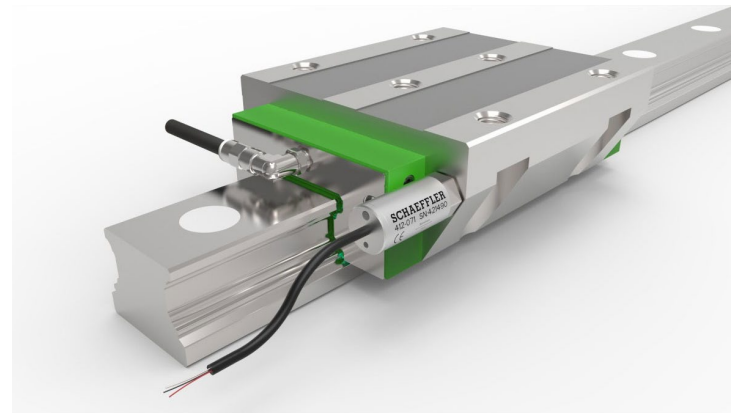
[MORE](#)

## Longer Operating Life for Monorail Guidance Systems

### Linear recirculating ball bearing and guideway assemblies with Schaeffler DuraSense

Monorail guidance systems with Schaeffler DuraSense benefit from a longer operating life thanks to integrated condition monitoring and automatic relubrication. Following the introduction of DuraSense for linear recirculating roller bearing and guideway assemblies, the system is now also available for linear recirculating ball bearing and guideway assemblies.

[MORE](#)



## Systematically arriving at just the right bearing solution

### An extensive and well-balanced product range

Schaeffler's INA and FAG brand products in the bearing



arrangements of rotary tables, feed spindles, main spindles, and linear axes have been world leaders for many decades. Precise and durable, low-maintenance and immediately ready to install: From consultation to service, Schaeffler has an extensive and well-balanced product range available for all bearing arrangements in machine tools.

MORE

[Subscribe](#) | [Unsubscribe](#)

[Conditions of use](#) [Privacy policy](#) [Legal notice](#)



© 2020 Schaeffler [www.schaeffler.sg](http://www.schaeffler.sg)